

# PT. ROBINA ANUGERAH ABADI

## COMPANY PROFILE

Rukan Artha Gading Niaga Blok C No.33

Jakarta 14240 - Indonesia

Telp: 021 - 4585 0647/8, 021 - 4585 4604

Fax : 021 - 4585 4605

Website: [www.robinaanugerah.com](http://www.robinaanugerah.com)

Email 1 : [sales@robinaanugerah.com](mailto:sales@robinaanugerah.com)

Email 2 : [info@robinaanugerah.com](mailto:info@robinaanugerah.com)



# TABLE OF CONTENT

- [Texture Analyser...6](#)
- [Egg Quality Tester...7](#)
- [Solid Sample Dimensional Profile Tester...8](#)
- [Water Activity \(AW\) Meter...9](#)
- [RH & Temp Digital Sensor...10](#)
- [Refractometer...11](#)
- [Density Meter...12](#)
- [Polarimeter...13](#)
- [Saccharimeter...14](#)
- [Digital Imaging Tester for Baked Goods...15](#)
- [Packaging Tester...16](#)



# ABOUT US

PT.Robina Anugerah Abadi is a laboratory and scientific instruments supplier in Indonesia since 2006 that serves both private and government sectors. We are an exclusive distributor of world-leading instruments for food & beverage, sugar milling, pharmaceutical, chemical, flavour, fragrance & essential oil, cosmetics, petroleum industry. We also provide technical and application support, installation, and training, as well as services for every instrument we supplied.

Our customer satisfaction is our supreme effort.

## VISION

Become a reliable and trusted laboratory instrument supplier company

## MISSION

Providing fast service, qualified products and competitive prices thus it can be a solution to every customer's need



PRINCIPLES

***Stable  
Micro  
Systems***

**novasina**  
The Art of Precision Measurement

**RUDOLPH  
RESEARCH  
ANALYTICAL**

**C-Cell**   
Baking Quality Analyser

**Labthink<sup>®</sup>**

## Texture Analyser

Stable Micro Systems' range of texture analysers can measure and analyse fundamental, empirical and imitative tests covering those relating to texture analysis, materials properties as well as effects of rheology of solid, semi-solid, viscous liquid, powder and granulate materials across a wide range of industries.



# Stable Micro Systems



ROBINA ANUGERAH ABADI



[info@robinaanugerah.com](mailto:info@robinaanugerah.com)



[www.robinaanugerah.com](http://www.robinaanugerah.com)

**Over 300 Attachments to  
match your specific needs!**

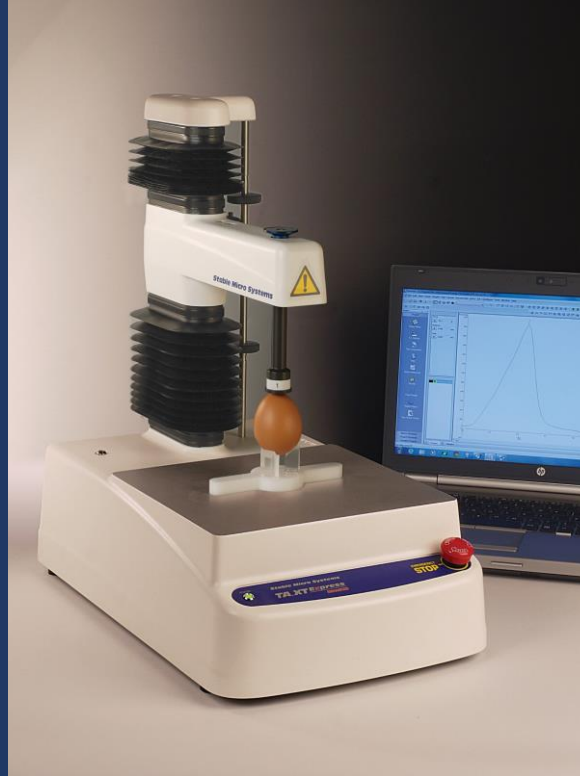


MATERIALS & PRODUCTS	FOOD
ADHESIVES	BAKERY
COSMETICS & SKINCARE	CEREALS
PHARMACEUTICAL & MEDICAL	CONFECTIONERY
PHARMACEUTICAL PACKAGING	DAIRY
PERSONAL CARE PRODUCTS	FRUIT
MEDICAL DEVICES	VEGETABLES
CONTROLLED RELEASE	FISH
HAIR & HAIR PRODUCTS	MEAT
ELECTRONICS	PASTA & RICE
LEATHER	SNACKS
MATERIALS	FOOD PACKAGING
GELS & FILMS	PETFOOD & ANIMAL FEED
POWDER & GRANULES	GELS & FILMS

- ✓ Interchangeable loadcell
- ✓ Comprehensive software with build-in education zone / guide
- ✓ Wide application areas
- ✓ World leading texture analyser

## Egg Quality Test

The Stable Micro Systems suite of egg testing procedures provides the tools that enable the producer and packer of eggs to accurately and consistently measure the quality of their produce. They can regularly monitor a range of parameters to ensure that their eggs meet the required quality standards and that these are maintained throughout the laying period.



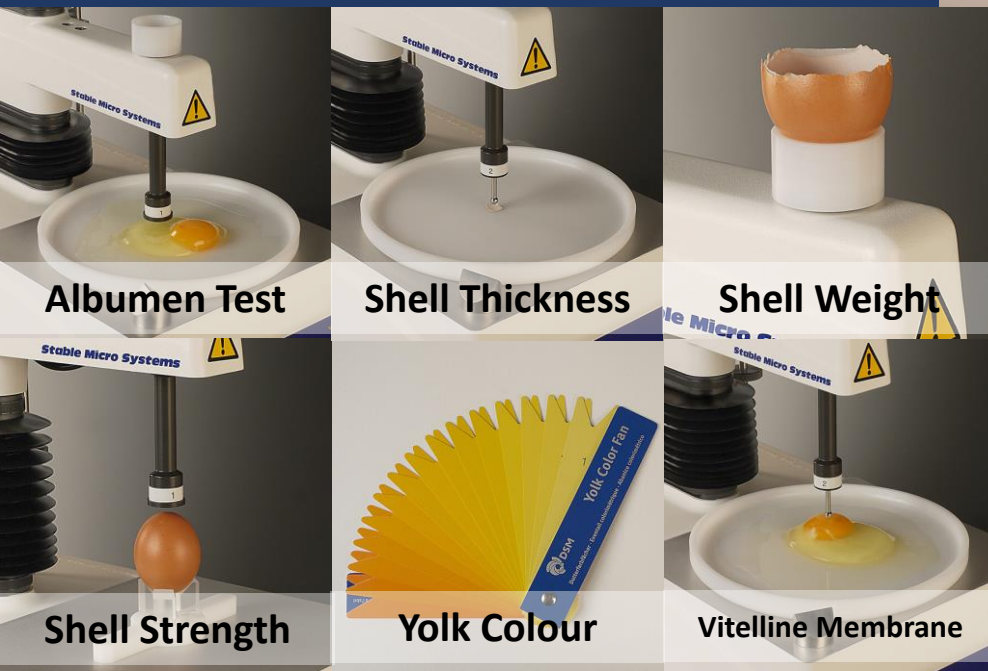
# Stable Micro Systems



ROBINA ANUGERAH ABADI

✉ [info@robinaanugerah.com](mailto:info@robinaanugerah.com)

🌐 [www.robinaanugerah.com](http://www.robinaanugerah.com)



Albumen Test

Shell Thickness

Shell Weight

Shell Strength

Yolk Colour

Vitelline Membrane

- Air Cell Height
- Whole Egg Weight
- Shell Breaking Strength
- Shell Deformation
- Egg Albumen Height
- Haugh Unit
- Dry Shell Weight
- Shell Thickness
- Vitelline Membrane Strength
- Yolk Colour

**14 Measurement in 4 Minutes!**

# Volscan Profiler

A benchtop laser-based scanner that measures the **volume, density and dimensional profiles** of **uniform and non-uniform solid** products in order to be able to control and monitor their manufacture. The rapid **3-dimensional digitisation** of products enables the automatic calculation of several detailed **dimension related parameters**.



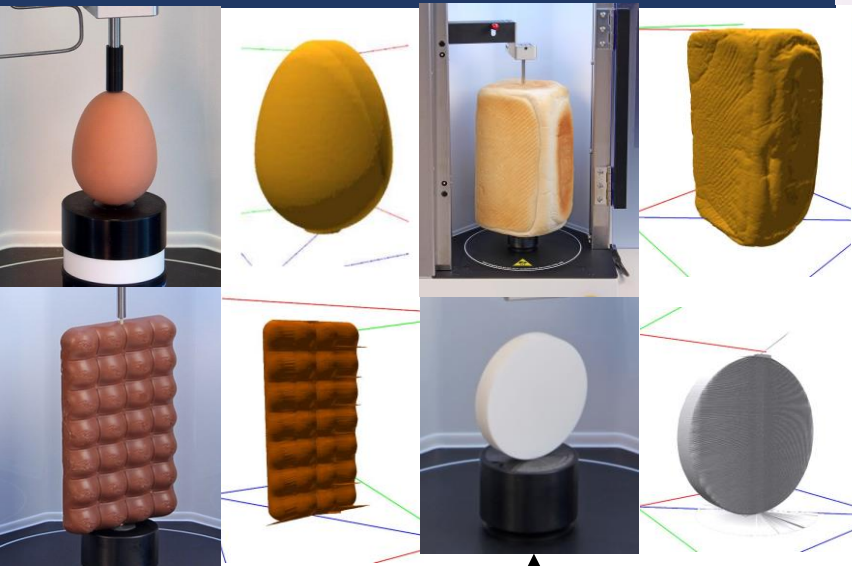
# Stable Micro Systems

 ROBIN ANUGERAH ABADI

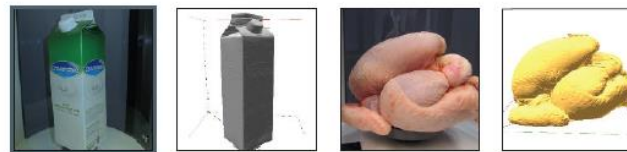
 [info@robinaanugerah.com](mailto:info@robinaanugerah.com)

 [www.robinaanugerah.com](http://www.robinaanugerah.com)

- ✓ **Non destructive test** suitable for fragile or brittle product
- ✓ Fast and accurate **as quick as 22 seconds** test
- ✓ **3D scan and numerical data**
- ✓ Safer than mercury displacement & X-ray

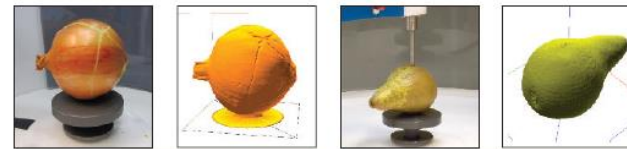


Ceramics



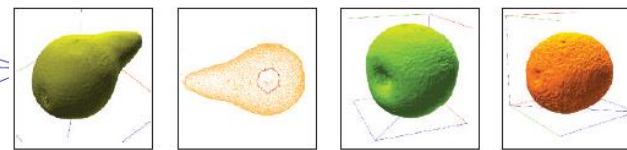
Packaging

Meats



Vegetables

Fruit



3D scan of pear

2D scan of pear

3D scan of apple

3D scan of orange

Specific Volume (ml/g):  
**0.44**  
Product Density (Kg/m<sup>3</sup>):  
**2269.58**  
Product Length (mm):  
**256.5**  
Surface Area (mm<sup>2</sup>):  
**95432.7**  
Max. Height (mm):  
**100.3**  
Width at Max. Height (mm):  
**100.2**  
Aspect Ratio at Max. Height:  
**1.00**



## Water Activity Meter

This measuring instrument provides support in the investigation of **product shelf life** and **the causes of product spoilage, texture changes or rancidity**. Our unique sensor technology for AW measurements supported by a fully thermostatted measuring chamber enables **extremely high accuracy and repeatability** for optimal quality control of your product.



Humidity Standard

**novasina**  
The Art of Precision Measurement

 **ROBINA ANUGERAH ABADI**

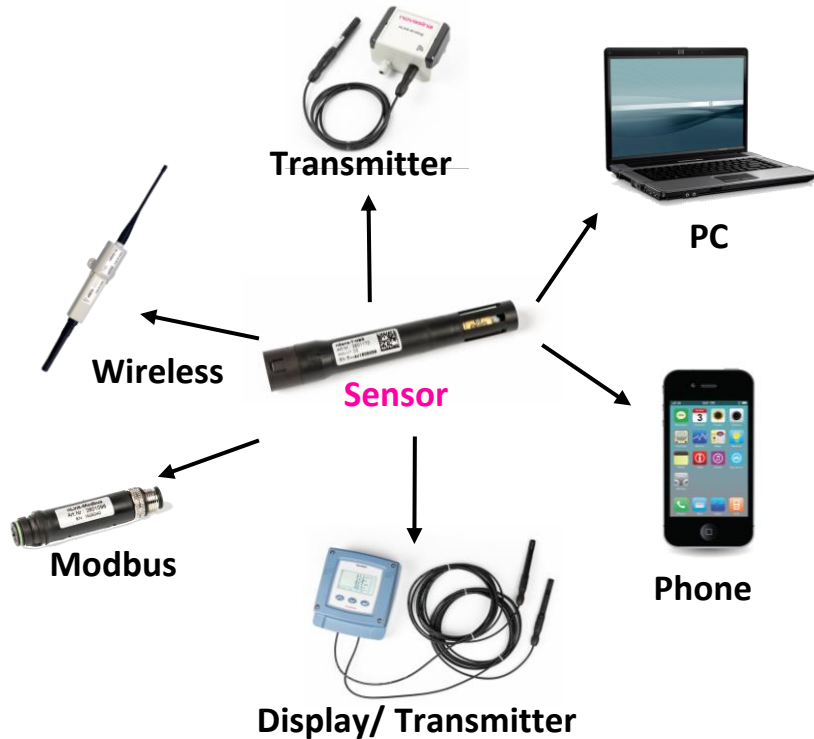
 [info@robinaanugerah.com](mailto:info@robinaanugerah.com)

 [www.robinaanugerah.com](http://www.robinaanugerah.com)

- ✓ **Reusable 3-5 years humidity calibration & verification standard**
- ✓ 21CFR11 compliant
- ✓ Temp. control 0-60°C
- ✓ Range of 0,0300-1,0000aw
- ✓ **Capable of measuring volatile sample**

## nSens – RH & Temp Sensor

Digital RH & Temperature sensor with flexible connection such as transmitter, mobile phone, or Modbus. The sensor uses **electrolytic** technology that makes it incredibly resistant to contamination and has very high accuracy.



**novasina**  
The Art of Precision Measurement

 **ROBINA ANUGERAH ABADI**

 [info@robinaanugerah.com](mailto:info@robinaanugerah.com)

 [www.robinaanugerah.com](http://www.robinaanugerah.com)

- ✓ Measuring range 0.5-100% rH (-20... 80°C)
- ✓ **No saturation effect at high humidity**
- ✓ **No contamination (H<sub>2</sub>O<sub>2</sub> , NH<sub>3</sub> and similar oxidants)**
- ✓ **No hysteresis**
- ✓ **Highest humidity accuracy 0.5 - 1.0 % (no competitor yet)**
- ✓ Digital sensor setup for flexible connection and quick replacement / calibration

# Refractometer

Rudolph Refractometers come with **Smart Measure™** Technology that virtually insures accurate **Refractive Index (RI)** and **BRIX**, measurements by automatically detecting when **the prism is improperly cleaned or insufficient sample is loaded**. All models come with a **digital touch screen**, and our **Dual Temperature Control** System utilizing Peltier Technology.



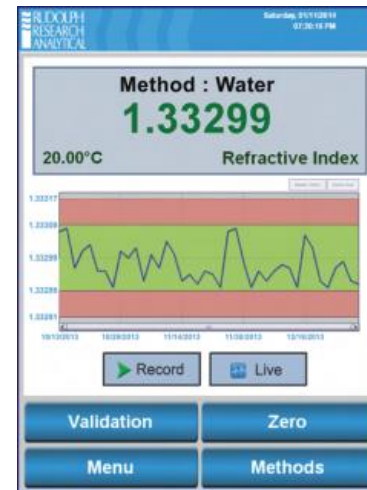
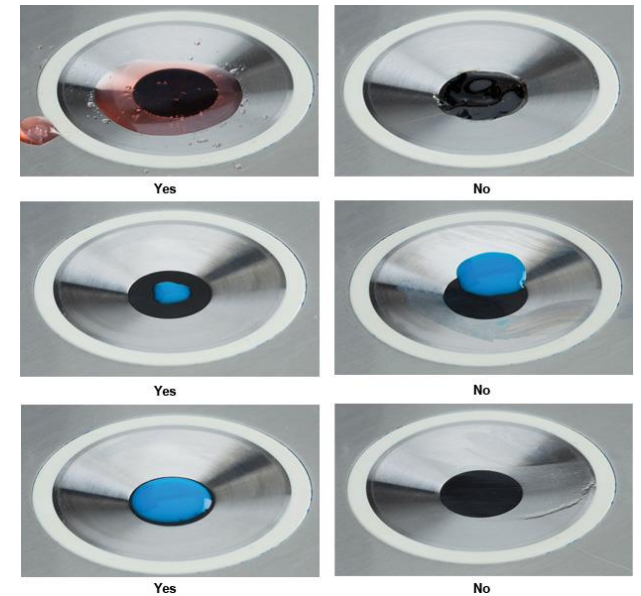

**ROBINA ANUGERAH ABADI**

✉ [info@robinaanugerah.com](mailto:info@robinaanugerah.com)

🌐 [www.robinaanugerah.com](http://www.robinaanugerah.com)

- ✓ Ability to measure **dark & viscous samples easily as clear samples**
- ✓ **Flat Scratch-Proof easy to clean Sapphire Prism**
- ✓ Range RI  $(1,26 - 1,72) \pm 0,0001/0,00001, /0,000001$  &  $(0 - 100)$  Brix  $\pm 0,1/0,01/0,001$
- ✓ Temperature Control  $(10 - 120)^{\circ}\text{C}$
- ✓ **Temperature Ramping**
- ✓ **Acid resistant sample well & plate**
- ✓ NIST traceable calibration fluids
- ✓ **Small Volume 200  $\mu\text{L}$  Sample**
- ✓ Volatile Sample & Custom Scales
- ✓ Touchscreen interface

**Smart Measure™** allows to tell if the sample is properly placed or not



## Density Meter

Rudolph Density Meter series is prepared to make the most accurate measurement by utilizing the **VideoView™** to **detect Bubble presence in the glass tube** that can decrease the measurement accuracy as well as **various sample loading options** to **minimize human error, quick test time, and optimize easy cleaning.**



**RUDOLPH**  
RESEARCH  
ANALYTICAL



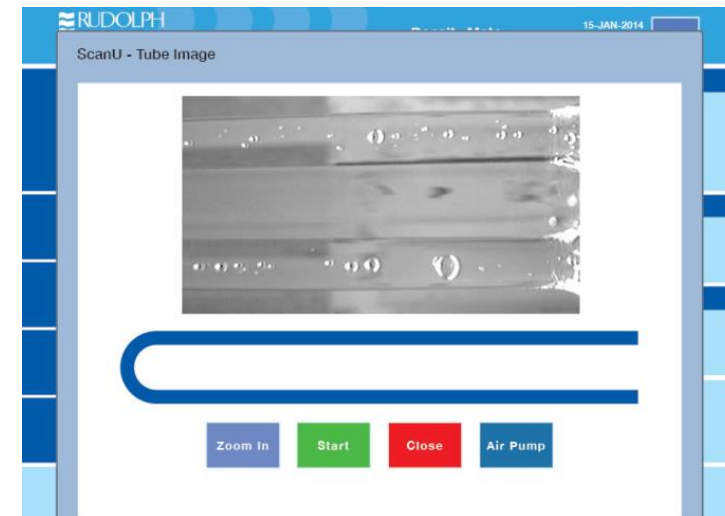
ROBINA ANUGERAH ABADI

✉ [info@robinaanugerah.com](mailto:info@robinaanugerah.com)

🌐 [www.robinaanugerah.com](http://www.robinaanugerah.com)

- ✓ **Able to measure %ABV of alcoholic beverage**
- ✓ Automatic Scanning of Entire **“U-Tube Bubble Detection”**
- ✓ **Temp. Control : ( 0 – 100 )°C**
- ✓ **Fast Measurement ( 30 – 60 ) Seconds**
- ✓ NIST / UKAS traceable CALIBRATION STANDARDS
- ✓ **Minimum Sample Volume : < 1 mL**
- ✓ Range : **( 0 – 3 ) gr/cm<sup>3</sup> ± 0,0001/0,00001/0,000001**
- ✓ Single Calibration for Multiple Temp. Measurements
- ✓ Touchscreen interface

**VideoView™** allows operator to check bubble presence in the sample glass tube



## Auto Polarimeter

Rudolph Autopol Series is not only provide vast range of accurate models, but the series is also equipped with **tungsten halogen lamp** that can last for **2000 hours**, the **ceramic measurement cell** is designed to transfer heat optimally and **easy filling**. **FillStation™** is created to **guarantee no error in sample loading**.



Sample chamber with built in temperature probe

**RUDOLPH**  
RESEARCH  
ANALYTICAL

 **ROBINA ANUGERAH ABADI**

 [info@robinaanugerah.com](mailto:info@robinaanugerah.com)

 [www.robinaanugerah.com](http://www.robinaanugerah.com)

- ✓ **365nm, 405nm, 436nm, 546nm, 589nm, 633nm (other wavelengths available)**
- ✓ Measure **Very Low Concentration & Racemic Solution**
- ✓ Measuring mode : **Optical Rotation, Specific Rotation, Concentration & Sugar Scale**
- ✓ **Small Sample 0,05 mL** for “RESEARCH APPLICATION”
- ✓ **Temperature Control (10 – 40)°C**
- ✓ NIST traceable Quartz Control Plate for validation & calibration
- ✓ **Resolution : 0,01/0,001/0,0001°Arc**
- ✓ Touchscreen interface

### Only Rudolph Provides:

NVLAP Accreditation  
Single Rotation TempTrol™,  
NIST Traceable Quartz  
Calibration Standard.



2 Lamps  
Included  
2,000 hours  
each.



Lifetime Guarantee,  
TempTrol™ Ceramic Quartz  
measurement cell



NIST Traceable Digital Temperature Probe



The Rudolph FillStation™  
Patent No. 9,677,995



Temperature Validation Cell

## Saccharimeter

Rudolph Saccharimeter series have **dilution and cell length correction** allows **the correct multiplier to display the reading** as if the sample were prepared as a 1 normal solution in a 200 mm optical pathlength cell. **Sample specific programs** is an unlimited number of methods which can be pre-defined for specific juices.



Sample chamber with built in temperature probe

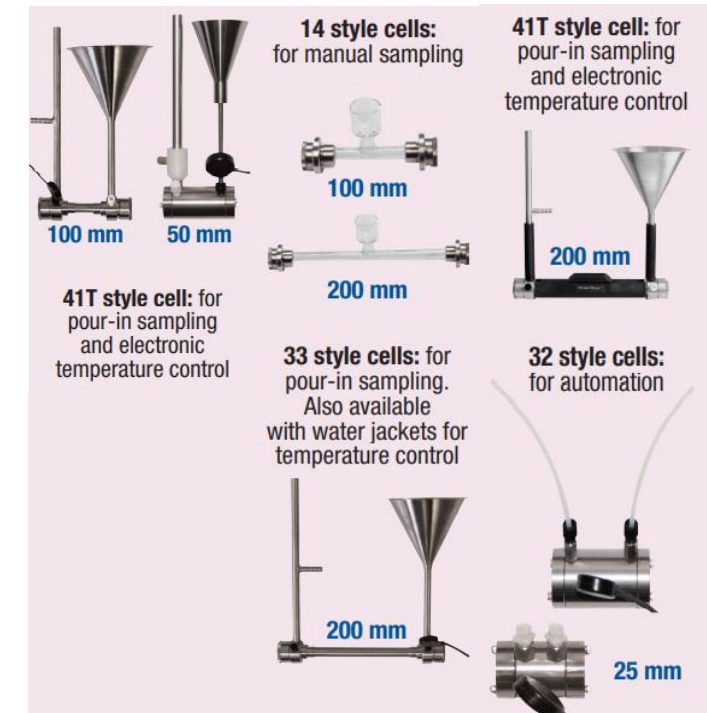
**RUDOLPH**  
RESEARCH  
ANALYTICAL

 **ROBINA ANUGERAH ABADI**

 [info@robinaanugerah.com](mailto:info@robinaanugerah.com)

 [www.robinaanugerah.com](http://www.robinaanugerah.com)

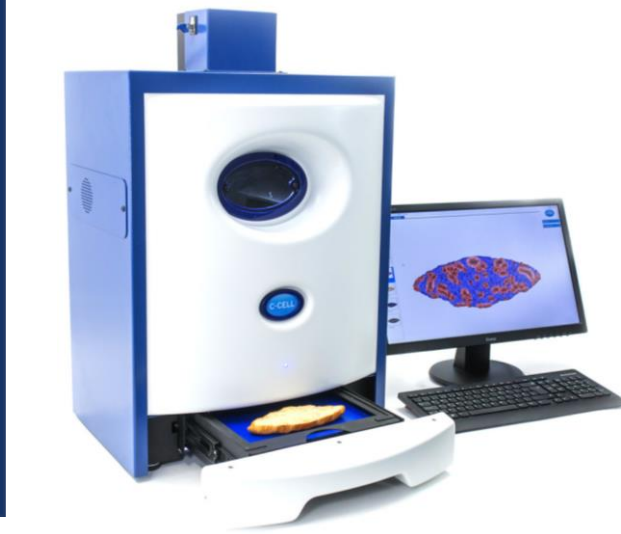
- ✓ **Dual Wavelengths**
- ✓ **NIST Quartz Control Plate for Validation & Calibration**
- ✓ **Flow through cell for automation**
- ✓ **Built-in PURITY software and RANDEMEN SCALE**
- ✓ **0,01°Z or 0,02°Z ACCURACY**
- ✓ **Temperature Control (18 – 35)°C**
- ✓ **Measurement range : ± 259°Z, ± 89,9°Arc**
- ✓ **Automatic Temperature correction: 18°C-40°C**
- ✓ **Touchscreen interface**



All sample cells compatible with all models

## C-CELL Colour

C-Cell is a **digital imaging system** that provides an objective evaluation of **baked products**. It processes **high-resolution colour images** in a bespoke software programme to **quantify size, shape and internal structure**.



# C-Cell

Baking Quality Analyser



ROBINA ANUGERAH ABADI

✉ [info@robinaanugerah.com](mailto:info@robinaanugerah.com)

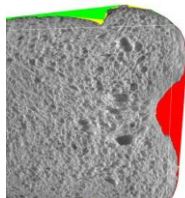
🌐 [www.robinaanugerah.com](http://www.robinaanugerah.com)

C-Cell produces over **50 measurements** per analysis, these are broken down into the following sub-groups to determine **product quality in bread**.

- Colour
- Dimensions
- Shape
- Cell Size
- Elongation
- Inclusions
- External features
- Bread score



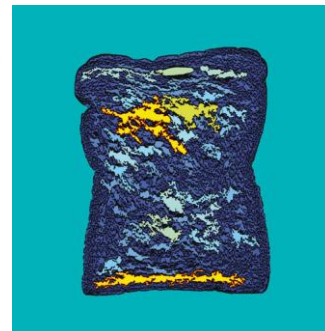
Inclusions



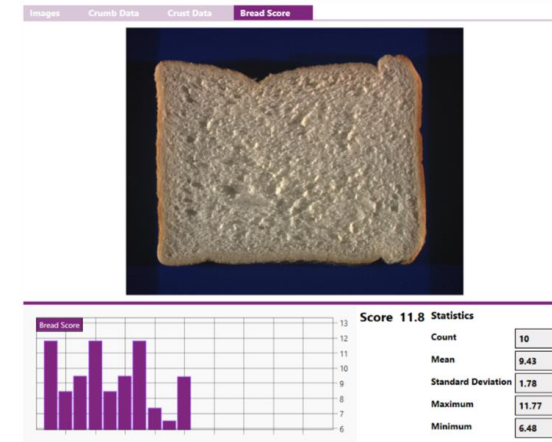
Dimensions



Colour



Cell Size & Elongation



C-Cell can be configured to include a **scoring algorithm** to support its 60+ parameters measured for each sample. These algorithms provide a **bread score**, which quantifies the bakers specific traits into a single figure score for ease of use. They are **product and process specific**, and are **developed using data from 1 specific baker**.

## Labthink

Labthink provides more than 20 types of testing instruments and all Labthink testing instruments are featured with advanced testing technology and comprehensive configurations. Instruments are professionally used for flexible **materials testing**, which mean more accuracy, more precision.



OTR & WVTR  
Tester



Friction/Peel  
Tester



Gas  
Permeability



Heat Seal Tester



Leak & Seal  
Strength Tester



Headspace Gas  
Analyser

# Labthink<sup>®</sup>



ROBINA ANUGERAH ABADI

✉ [info@robinaanugerah.com](mailto:info@robinaanugerah.com)

🌐 [www.robinaanugerah.com](http://www.robinaanugerah.com)

- ✓ Box compression tester
- ✓ Air Permeability Tester
- ✓ Thickness Tester
- ✓ Auto Tensile Tester
- ✓ Hot Tack Tester
- ✓ Digital Torque Tester
- ✓ Tearing tester
- ✓ Rub tester
- ✓ Flex durability tester
- ✓ Fogging tester
- ✓ Falling Dart Impact Tester
- ✓ Film Pendulum Impact Tester
- ✓ Migration & Non-volatile-matter Content Tester





# Exhibition



ROBINA ANUGERAH ABADI

# Seminar



ROBINA ANUGERAH ABADI



# OUR ADVANTAGES

- Experienced, trained, and certified technicians
- Fast response to every customer request
- More than 10 years of experiences in selling laboratory instruments
- Successfully sold more than 200 instruments in various public and private companies, leading offices, testing labs, and universities in Indonesia
- Offers at competitive prices
- Guarantee up to 2 years

Rukan Artha Gading Niaga Blok C No.33  
Jakarta 14240 - Indonesia  
Telp: 021 - 4585 0647/8, 021 - 4585 4604  
Fax : 021 - 4585 4605  
Website: [www.robinaanugerah.com](http://www.robinaanugerah.com)  
Email 1 : [sales@robinaanugerah.com](mailto:sales@robinaanugerah.com)  
Email 2 : [info@robinaanugerah.com](mailto:info@robinaanugerah.com)

